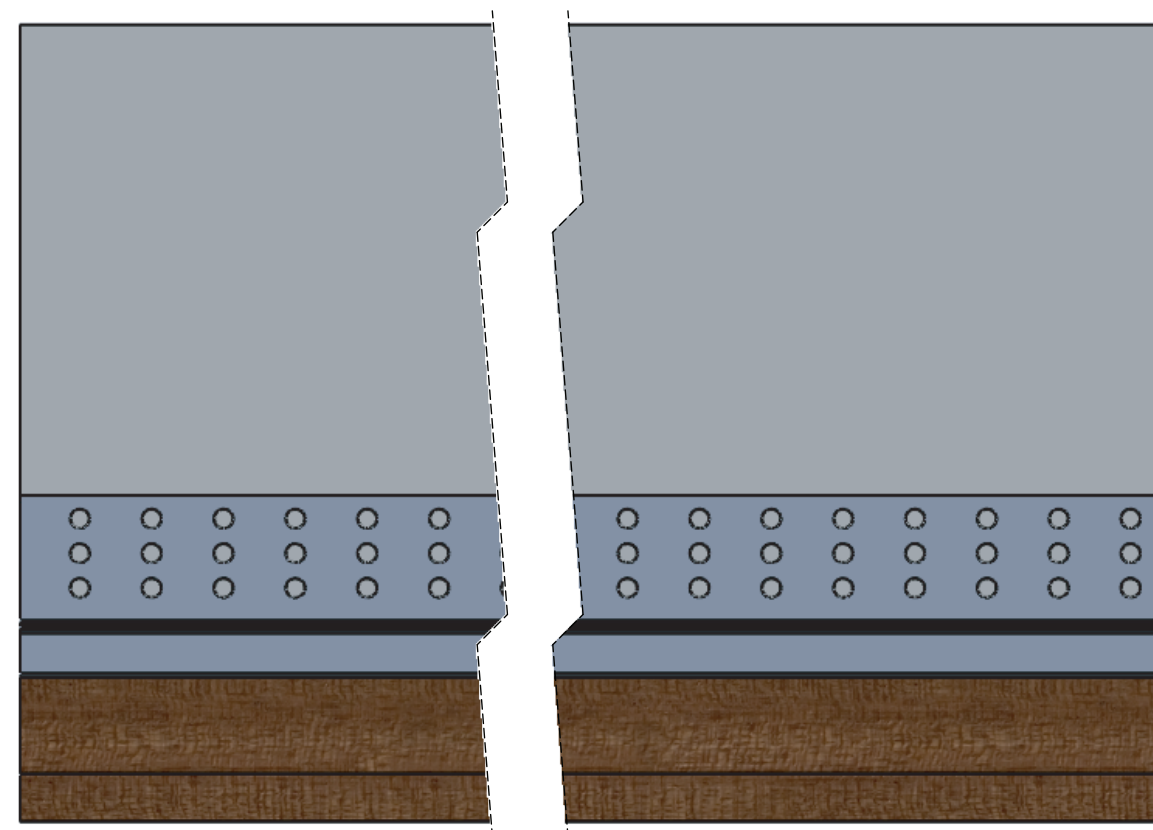
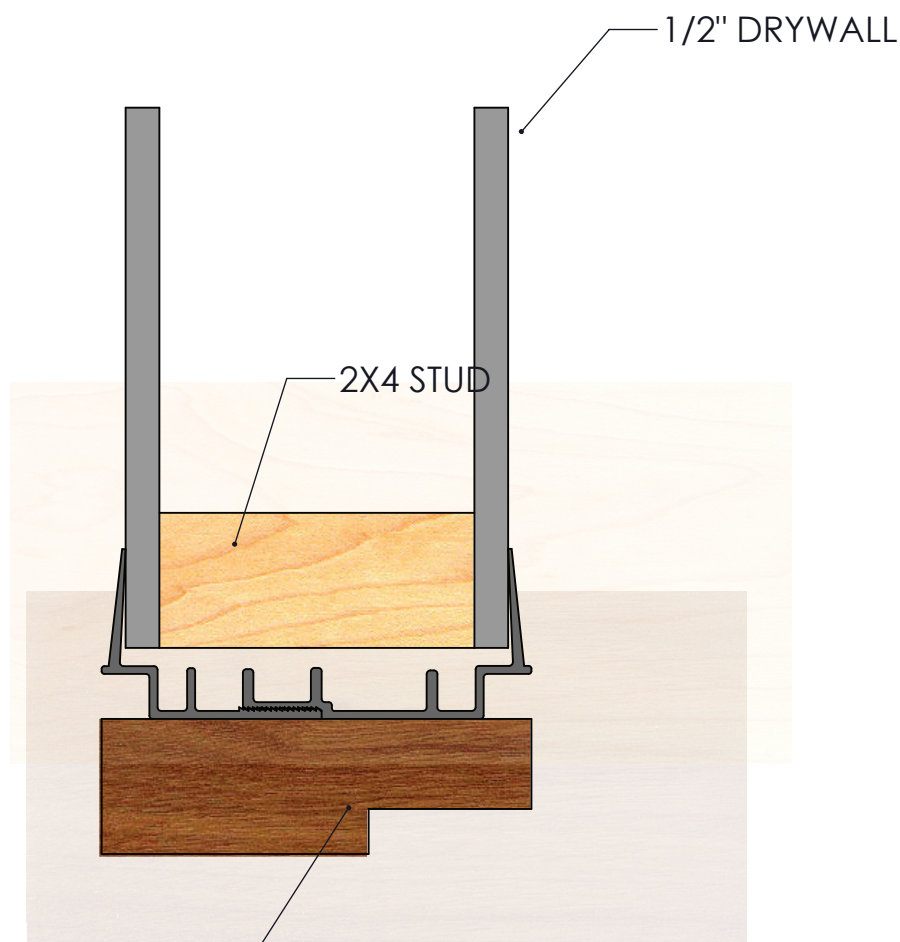
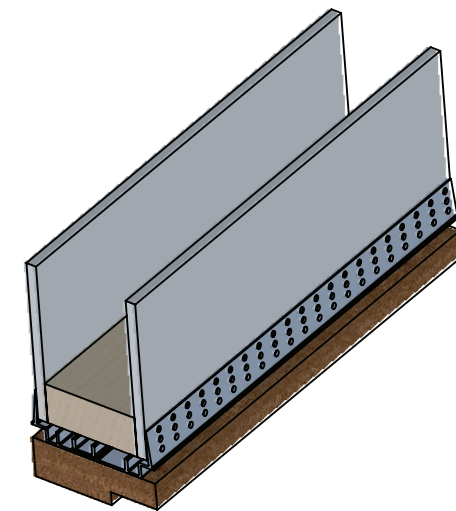


# ZIPCLIK




"Innovative Solutions for Contemporary Design and Architecture"



1 1/2" X 4-13/16" RABBETED JAMB WITH SHARP CORNERS ON ALL EDGES

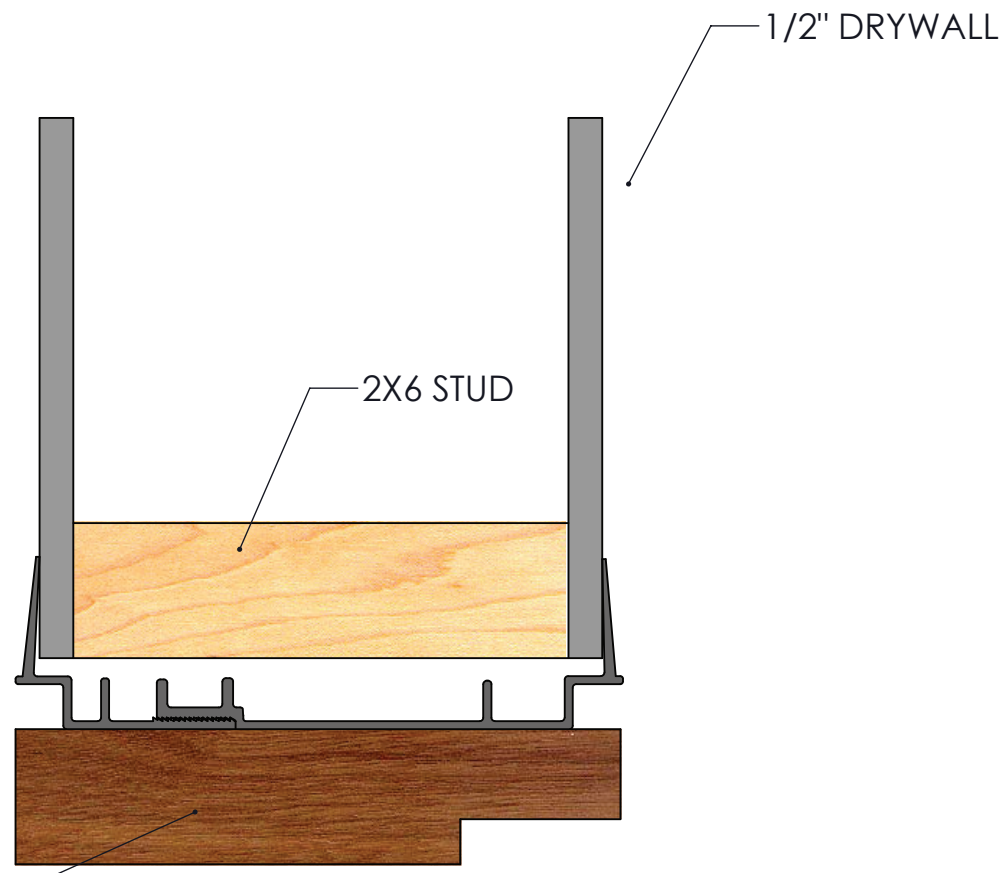
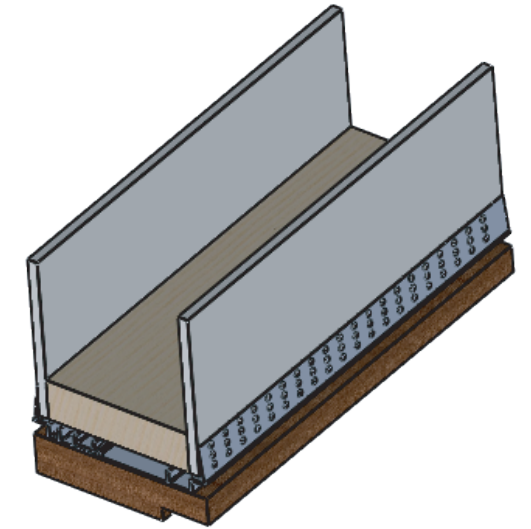
NOTE:  
WE OFFER JAMBS BY SPECIAL ORDER FOR WALLS WITH 5/8" DRYWALL.  
PLEASE CONTACT YOUR LOCAL REPRESENTATIVE.

 <b>Forest View</b> INDUSTRIES	PROPRIETARY AND CONFIDENTIAL THE INFORMATION CONTAINED IN THIS DRAWING IS THE SOLE PROPERTY OF FORESTVIEW INDUSTRIES. ANY REPRODUCTION IN PART OR AS A WHOLE WITHOUT THE WRITTEN PERMISSION OF FORESTVIEW INDUSTRIES IS PROHIBITED.		TITLE: <b>2X4 WALLS</b> 1 1/2" X 4-13/16" RABBETED JAMB 1/2" REVEAL		
	DRAWN BY: APPROVED BY: CHECKED BY:	DATE: DATE: DATE:	SIZE B	DWG. NO. 2X4 WALLS WITH 1/2" DRYWALL	REV A
	DO NOT SCALE DRAWING		SCALE: 1:2.5	WEIGHT:	SHEET 1 OF 1

# ZIPCLIK



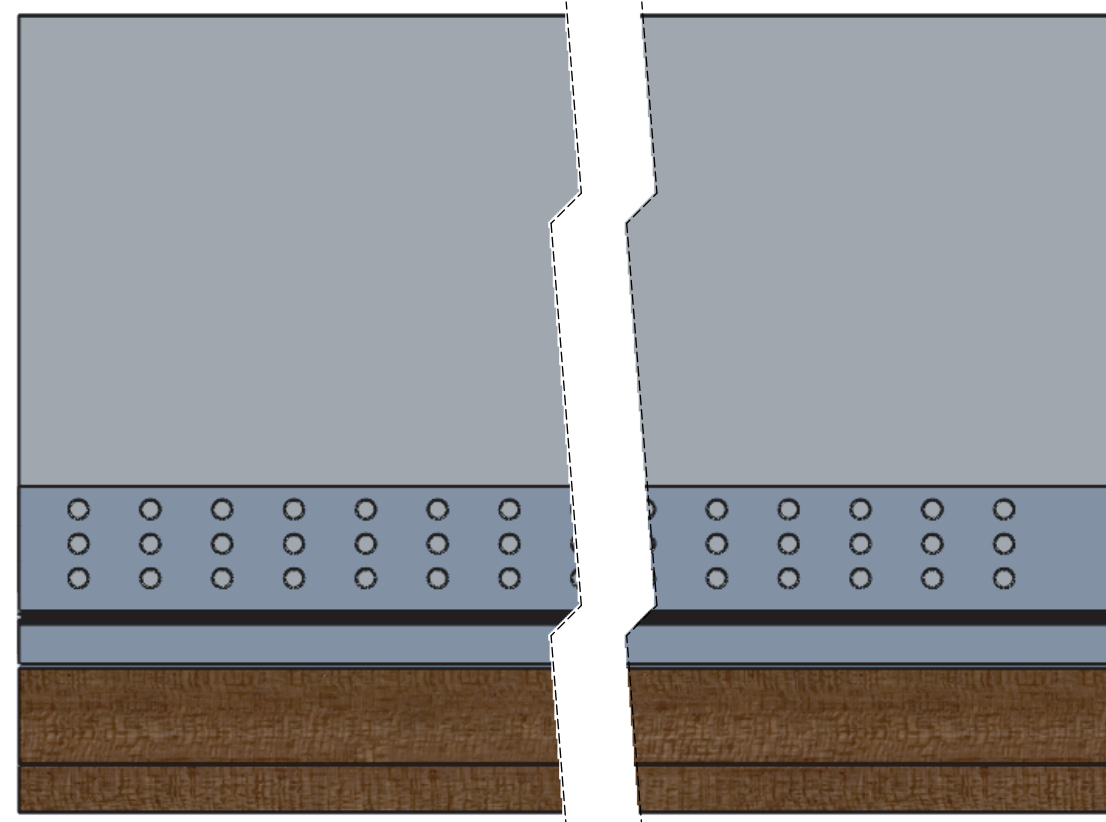
"Innovative Solutions for Contemporary Design and Architecture"



1/2" DRYWALL

2X6 STUD

1 1/2" X 6-13/16"  
RABBETED JAMB WITH SHARP  
CORNERS ON ALL EDGES



NOTE:  
WE OFFER JAMBS BY SPECIAL ORDER FOR WALLS WITH 5/8" DRYWALL.  
PLEASE CONTACT YOUR LOCAL REPRESENTATIVE.



Forest View  
INDUSTRIES

PROPRIETARY AND CONFIDENTIAL  
THE INFORMATION CONTAINED IN  
THIS DRAWING IS THE SOLE  
PROPERTY OF FORESTVIEW  
INDUSTRIES. ANY  
REPRODUCTION IN PART OR AS A  
WHOLE WITHOUT THE WRITTEN  
PERMISSION OF  
FORESTVIEW INDUSTRIES IS  
PROHIBITED.

TITLE:  
**2X6 WALLS**  
1 1/2" X 6-13/16" RABBETED JAMB  
1/2" REVEAL

DRAWN BY:	DATE:
APPROVED BY:	DATE:
CHECKED BY:	DATE:

DO NOT SCALE DRAWING

SIZE B	DWG. NO. 2X6 WALLS WITH 1/2" DRYWALL	REV
SCALE: 1:2.5	WEIGHT:	SHEET 1 OF 1